

# T2

Rooftop air conditioning unit



# Contents

**Introduction** ..... Page 3

**T2 rooftop units are a part of  
your building** ..... Page 4

**T2 advantages** ..... Page 5

**References** ..... Page 6





Botanical garden, Zürich

# T2 rooftop air conditioning unit

---

The T2 construction system is a screwable aluminium framework. The outer shell of the units are made with strong, insulating sandwich panels, which are bonded with the screwable T2 system. The profiles build

beside the interior and exterior structure a continuous sealing level for a proper thermal separation. The unit is sealed like a winter garden or a metal facade.

- Building extension on the roof – spare yourself the room
- Construction and materials according to your building
- Pre-installed technology – save yourself the interfaces
- Transport and assembly, quickly ready for use
- Long-lasting and economical. High-quality construction and strong insulation – a good investment



# T2 rooftop air conditioning unit are a part of your building

## Frame construction

The structure is mounted on a robust galvanized steel frame with all round weatherboards in the same size as the transport and assembly units.

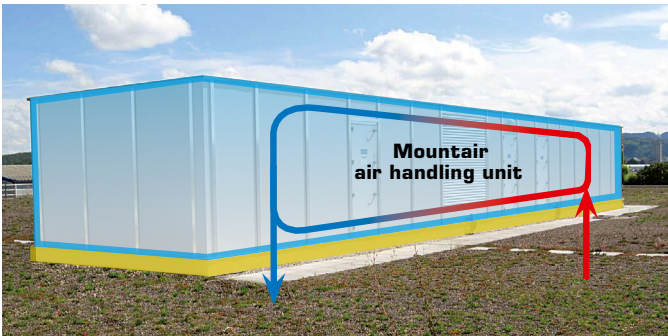
T2 unit with Sarnafil roof, in the standard colour of the unit RAL 7015/7035 – aluminium raw.

The construction is a visible part of the building hull and can be specified accordingly, visually and physically.

- Thickness of insulation / Soundproofing-Solutions
- Outer panel, colour and material individual
- Inner panel, quality levels 2, 3 and 4 per SWKI
- Roof with Sarnafil or double rabbet Uginox

## Tight cabinet with system

- Corner profile and panel are continuous. Fittings without intersections.
- Sealing levels interior and exterior physically tight.
- Structure and material adapted to the building.
- System integration heat recovery, heat pump and controls.



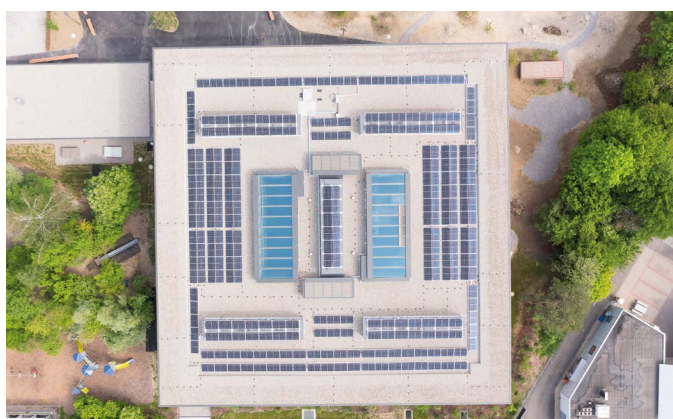
**T2 insulation 60 - 200 mm**  
**Building insulation 100 - 200 mm**

T2 MONOBLOC			
Type	Height	Width	V with 2 m/s
T2-15-20	1200	1500	8500
T2-20-20	1500	1500	11 500
T2-25-20	1800	1500	15 000
T2-30-15	2200	1200	13 000
T2-30-20	2200	1500	18 000
T2-35-18	2500	1250	20 000
T2-35-20	2500	1500	21 000
T2-40-20	2900	1500	24 000
T2-25-50	1800	3600	36 000
T2-30-60	2200	4200	54 000



## Architectural integration

University Plattenstrasse, Zurich-Centre



## Technical integration

Martin Haffter School, Weinfelden



## Quick and easy installation

Säntispark hotel, Abtwil

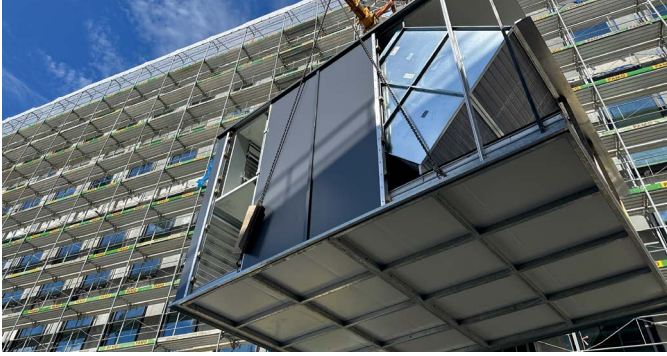


## Transport in one-piece or in several pieces possible

Renovation of indoor swimming pool, Spreitenbach



## References



2023

### VZUG

- 9 ventilation units with a total of around 132'000 m<sup>3</sup>/h.
- Large T2 rooftop units. Units for outdoor installation with Sar-nafil roof. T2 building system with PIR insulation (60/100 mm). Incl. Plate heat exchanger-heat recovery system, air heater, air cooler, dummy part for steam humidifier



2020

### Martin Haffter School building

- 6 monoblocks with enthalpy plate exchanger each (with moisture recovery)
- T2 roof units 4320 m<sup>3</sup>/h each and complete system regulation
- T2 roof unit with 6000 m<sup>3</sup>/h, S2 indoor unit with 6200 m<sup>3</sup>/h



2020

### Commercial building Feldstrasse 1+3

- T2 roof centre with two internal monoblocks with plate heat exchangers, system 1 with zone division supply air
- Air volume system 1: 18'000 m<sup>3</sup>/h  
Air volume system 2: 12'000 m<sup>3</sup>/h



2023

### Renovation of Ermatingen sports centre

- T2 roof centre with inspection aisle, Supply air-exhaust air run-around coil system
- Total air volume: 12'000 m<sup>3</sup>/h
- 3 zones with their own zone air heating, integrated run-around coil pump station, integrated control cabinet



2020

### Winter World, artificial ice rink

- 5 monoblocks
- Ventilation units for cloakrooms, restaurant and kitchen
- T2 roof units with plate exchanger heat recovery system
- Air volume around 26'000 m<sup>3</sup>/h



2020

### Renovation of indoor swimming pool, Spreitenbach

- Unit with 20'000 m<sup>3</sup>/h, plate heat exchanger heat recovery system and integrated heat pump
- Cloakroom system 6000 m<sup>3</sup>/h with run-around coil heat recovery system and an Alpenklang for technical rooms





2019

### Endress + Hauser, Hall 5, Reinach Basel

- Supply air monobloc, internal inspection aisle
- $V = 24'000 \text{ m}^3/\text{h}$
- run-around coil heat recovery system, dehumidification, NAW and supply air humidifier



2018

### Plattenstrasse, University of Zurich

- 1 × T2 roof unit with Hybaco,  $Q = 200 \text{ kW}$
- Air volume supply air = exhaust air =  $17'000 \text{ m}^3/\text{h}$ , heat recovery pump station,
- $5.4 \text{ m}^3/\text{h}$  with plate heat exchanger heating and cooling



2014

### Hotel Säntispark

- Special T2 architecture
- Hybrid dry cooler  $520 \text{ kW}$



2014

### Botanical Garden, University of Zurich

- Renovation of supply air monobloc ( $110'000 \text{ m}^3/\text{h}$ )
- 1 × pumping station (30 - 600 kg/h)
- 2 × supply air humidifiers with  $55'000 \text{ m}^3/\text{h}$



2012 / 2002

### New production building, Interprox Delémont

- Twin units for  $2 \times 25'000 \text{ m}^3/\text{h}$  with central inspection aisle



2019

### Conversion of building 1202 + 1235, Kemptthal

- 2 × supply air/exhaust air monoblock with plate heat exchanger heat recovery system
- $V = 17'500 \text{ m}^3/\text{h}$  and  $25'000 \text{ m}^3/\text{h}$
- With EC fans, air heater, air cooler

**Mountair AG**  
**Lufttechnischer Apparatebau**  
Sonnenwiesenstrasse 11  
8280 Kreuzlingen

T +41 71 686 64 64  
F +41 71 686 64 76

**Mountair AG, Basel**  
Florenzstrasse 9  
4142 Münchenstein

T +41 61 841 09 74  
F +41 61 841 09 75

**Mountair AG, Suisse Romande**  
Route de Saint Julien, 275  
1258 Perly

T +41 22 771 58 36

[info@mountair.com](mailto:info@mountair.com)  
[www.mountair.com](http://www.mountair.com)

